

A

Summer Greek 2009

Χάρης καὶ εἰρήνη σοι!

Ω

The Lord's Prayer

www.gettysburgseminary.org/mhoffman

>> NT Greek Summer 2009

>> The Lord's Prayer

Introducing...

G.A.T. GREEK ACTION TEAM

Introductions ὁ διδάκαλος



mhoffman@ltsg.edu
Valentine 414 - x2414

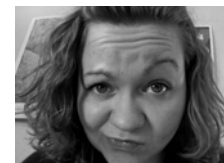
Introductions οἱ συνεργοί μου



Cassandra Lamb



Traci Bowman



Jess Hamme

Introductions

Τί τὸ ὄνομά σου ἔστιν;

Genesis 32.28 LXX

Check Course Homepage!

www.gettysburgseminary.org/mhoffman

>> NT Summer Greek 2009

Schedule, etc.

- 8:30-9:30 class
 - 15 minute break
- 9:45-10:30 class
 - 10:45-11:45 Tutoring session (optional)
 - 11: 50-12:10 Chapel
 - Lunch
- 1:30-2:15 class
 - 15 minute break
- 2:30-3:15 class
 - 3:30-4:30 tutoring session
 - 6:30 Evening tutoring session

Schedule, etc.

- Chapel at 11:50 (except Friday 25th and 1st)
- Monday:
 - Quiz at 8:30
 - 9:15 Sharing Call Stories
 - Regular afternoon schedule
- Thursday afternoon: review
- Friday morning: tests
- Sessions / Calendar – cf. Syllabus and Course Homepage

Why bother with Greek?

οὕτως γὰρ ἠγάπησεν ὁ θεὸς τὸν κόσμον...
houtōs gar ἔgapêsen ho theos ton kosmon

For God so loved the world... (KJV, NRS)
For God loved the world so much... (NLT)
God loved the people of this world so much... (CEV)
For this is the way God loved the world... (NET)

Does God still love the world?

Why bother with Greek?

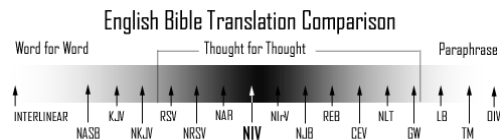


Chart reflects a preference for NIV

One who translates literally, lies;
one who adds to the text, blasphemes.

Jehuda ben Hai

<http://web.archive.org/web/200610090330/http://www.tl.org/bible/translations/energy/translation2.pdf>

A

Ω

THE GREEK ALPHA-BETA

α	β	γ	δ	ε	ζ	η	θ
alpha	beta	gamma	delta	epsilon	zeta	eta	theta
Α	Β	Γ	Δ	Ε	Ζ	Η	Θ
α	β	γ	δ	ε	ζ	η	θ
ι	κ	λ	μ	ν	ξ	ο	π
iota	kappa	lambda	mu	nu	xi	omicron	pi
Ι	Κ	Λ	Μ	Ν	Ξ	Ο	Π
ι	κ	λ	μ	ν	ξ	ο	π
ρ	σ	ς	τ	υ	φ	χ	ψ
rho	sigma	tau	upsilon	phi	chi	psi	omega
Ρ	Σ	Τ	Υ	Φ	Χ	Ψ	Ω
ρ	σ	ς	τ	υ	φ	χ	ψ

DIPHTHONGS (vowels pronounced together)
 αι—like ai in aisle ει—like ei in eight
 οι—like oi in oil οι—like oi in group
 αι—like ai in aisle οι—like oi in group
 αι—like ai in aisle οι—like oi in group

IMPROPER DIPHTHONGS (Do not pronounce the alpha or beta)
 αι—like ai in aisle ει—like ei in eight
 οι—like oi in oil οι—like oi in group
 αι—like ai in aisle οι—like oi in group

BREATHING MARKS (These are two kinds of breathing marks that appear over vowels, diacritics, on the letter rho at the beginning of a word.)
 smooth breathing rough breathing

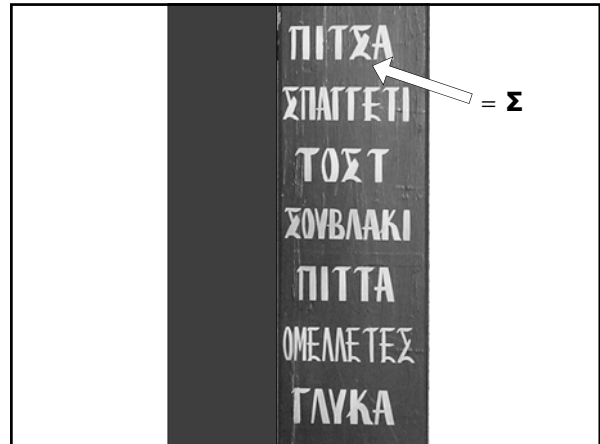
ACCENTS (There are three kinds of accents that help indicate which syllable to stress.)
 ACUTE GRAVE CIRCUMFLEX

PUNCTUATION
 Period . Comma ,
 Semicolon ; Question mark ?

Syllables

ἀπόστολος

ἀ - πό - στο - λος



Transliterate and Pronounce

- | | |
|--------------|----------------|
| 1. Ξύλον | 11. φωνή |
| 2. φόβος | 12. ψεύδος |
| 3. χάρις | 13. καλ' ἡμέρα |
| 4. παραβολή | 14. καλή σπέρα |
| 5. ἐγώ | 15. καλή νύξ |
| 6. ἄνθρωπος | 16. Χαῖρε |
| 7. κόσμος | 17. παρακαλῶ |
| 8. Παῦλος | 18. εὐχαρίστω |
| 9. Πέτρος | |
| 10. προφήτης | |

ἐγώ εἰμι τὸ φῶς τοῦ κόσμου·

γυμνασία - ἄσκησις - ἀγωνία

See Exercises on page 5

- 1) Keep practicing the alphabet – writing and speaking.
- 2) Keep practicing pronouncing the words.
- 3) Transcribe and transliterate the Lord's Prayer (Matthew 6.9-13) and practice reading it aloud. [For further practice, work on the NT text, John 1.1-4, in your book.] Get as far as you can.

γυμνασία - ἄσκησις - ἀγωνία

QUIZ:

- Alphabet
- Accents
- Breathing marks
- Syllables
- Transliteration
- Punctuation marks