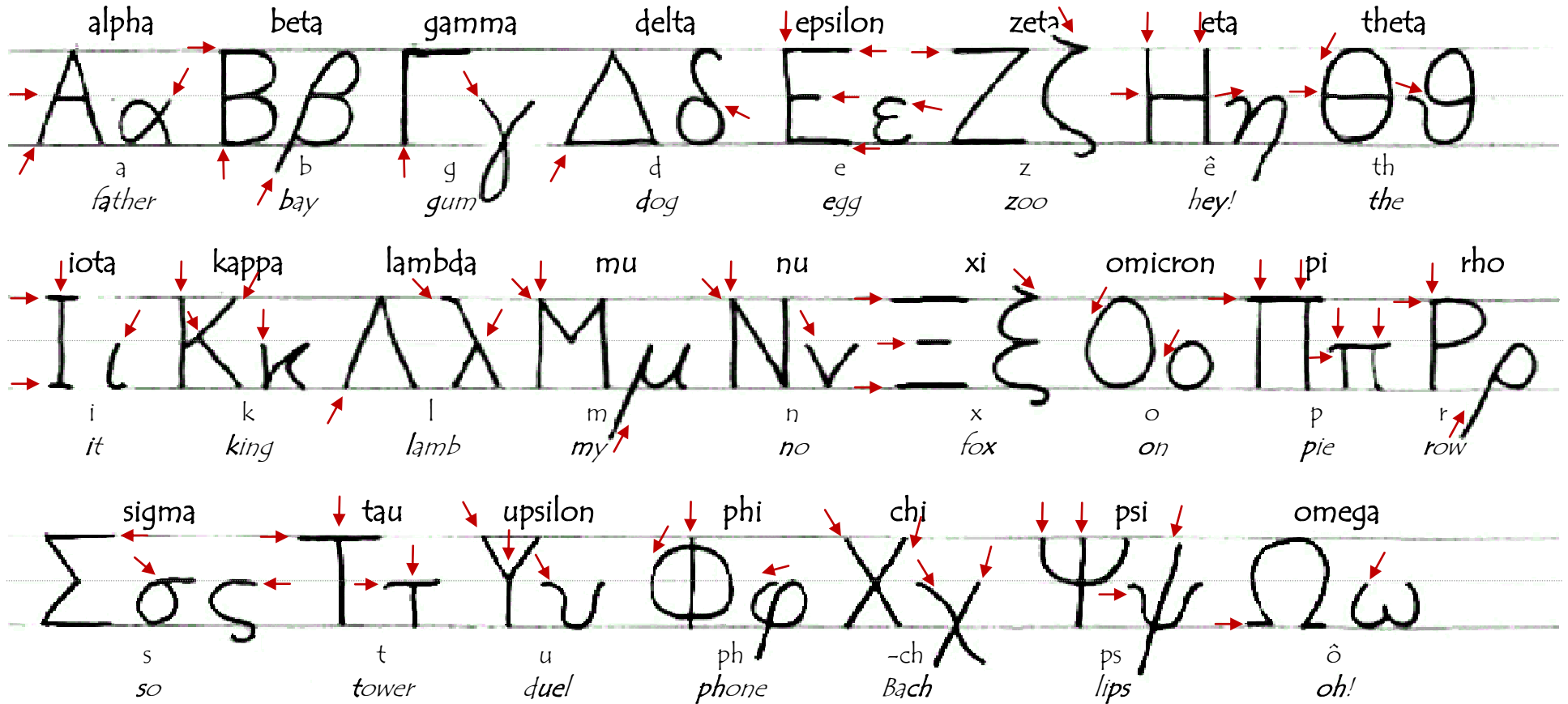


THE GREEK ALPHABET



DIPHTHONGS

(vowels pronounced together)

αι—like ai in aisle ευ—like eu in feud
 ει—like ei in eight ου—like ou in group
 οι—like oi in oil υι—like uee in queen
 αυ—like ow in cow ηυ—like (h)ey you!

IMPROPER DIPHTHONGS

use **iota Subscript**

Do not pronounce the iota

ϝ Ϟ ϟ

Gamma

pronunciation in combinations

γγ—ng γκ—nk
 γχ—nch γξ—nx

BREATHING MARKS

There are two kinds of breathing marks that appear over vowels, diphthongs, or the letter ϖ at the beginning of a word.

SMOOTH

ROUGH

silent

ἐν

en

sounds like h

ἔν

hen

ACCENTS

There are three kinds of accents that help indicate which syllable to stress.

ACUTE GRAVE CIRCUMFLEX
 ´ ` ˆ
 ~ or ^ or ^

PUNCTUATION

Period . Comma ,
 Semicolon ; Question mark ;